

This procedure for “*Remote Buttons Replacement for Holden Astra, Barina, Omega...* ” was prepared by Polmex – Western Australian supplier of Silicone Button Replacements for remote key controls of various car makes and models: Land Rover, Range Rover, Toyota, Mitsubishi, Kia, Holden, Commodore, Ford, Hyundai, BMW and more

For Orders please visit us on line at www.polmex.com.au

You are replacing broken plastic buttons cover with Silicone Replacement Pad from POLMEX.

Our pad is made form LSR Silicone and will not deform, change shape and break unlike original plastic cover. It is designed to seal key chamber for full protection against water and dust.



Tools to use:
Flat screwdriver

Parts you need:
Polmex Silicone Repair Pad

This remote is made up from 2 parts :

- Detachable part which consist of plastic buttons cover and electronic components case
- and key part with blade



Position flat screwdriver in a small slot at the back of your remote and twist it, so detachable part moves away from key part.



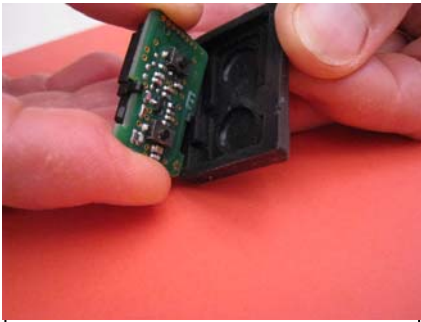
Pull buttons pad away from the key to separate it into 2 pieces



Pull apart detached buttons pad and separate it into individual components.



Discard used cover pad with broken buttons and prepare new replacement pad for fitting



Place electronic component part inside Polmex silicone replacement pad



Electronic component should sit inside silicone pad as shown above



Place silicone pad with electronic board on the top of hard case which consists of battery



Before sliding in buttons pad, position Key part the way that coding chip is located on the right hand side



Get a little bit of dishwashing liquid on the tip of your finger and spread it around edge of silicone pad for smoother sliding.



Holding both parts of buttons piece together, Slide it slowly, till whole part sits within key frame and is tightly locked in.



No reprogramming is need it as remote will work straight away.